

JACK'S PROFESSIONAL FERTILIZERS

The Peters family has designed and produced water soluble fertilizer for both Professionals and home gardeners for over 60 years. From industry standard products to the newest technology in Jack's Professional FeED line. We have a product for you and your customers! We have listed most of our warehouse stock formulas. Please ask a Waldo & Associates sales representative for other Jack's Fertilizer analysis.



JACK'S PROFESSIONAL™

The Jack's Professional line of fertilizers are the results of 65 years of innovative research and fertilizer blending.

Our four categories of fertilizer formulations make it easy to choose a product that will improve your plant quality immediately.

Acid [21-7-7]

- This is an ideal fertilizer for acid-loving plants in the nursery and landscape
- Provides a rapid correction of a high pH situation
- Unlike other brands, Jack's 21-7-7 Acid contains no harmful chlorides



All Purpose [21-5-20]

Ideal fertilizer for moderate to high alkalinity waters. It is formulated with over 60% nitrate nitrogen and a peat-lite level of micronutrients. It can be tank-mixed with 15-5-15 and other Jack's LX formulas.



Ca-Mg [15-5-15]

- Use this high phosphorus formulation during period of bud set to increase number and size of blossoms
- Resume use of traditional production fertilizers for the remainder of growing cycle to avoid internode stretch
- Great for vegetable production.



Ca-Mg [15-5-15]

- A truly comprehensive formulation with all of the macro and micro nutrients
- Contains 4% calcium and 2% magnesium, which makes it an ideal choice for use with water that is low in those nutrients
- Formulated with 80% nitrate nitrogen
- Contains a Peat-Lite level of micronutrients
- Can be tank mixed with Jack's 21-5-20 All-Purpose or any other Jack's LX formulations.



Dark Weather [15-0-15]

- The traditional high-calcium fertilizer (11%) for growers who need to supplement their fertilizer programs with calcium
- Alternate with 20-10-20 Peat-Lite or use as a "finisher" for flowering plants like poinsettias
- This formula has the traditional micronutrient levels needed for general production



Fall Pansy [17-3-19]

- Designed specifically for pansy production in late summer and early fall
- A nitrate/ammonium nitrogen system is more efficient in warmer weather than a traditional high nitrate pansy fertilizer
- Results in a potentially acidic product that will lower media pH over time
- This product also contains JR PETERS exclusive FeED iron chelate system plus additional magnesium and boron which is necessary to produce a consistent, high quality crop
- At 17% nitrogen content, you also use less product to achieve your desired rates



Geranium [15-15-15]

- An ideal fertilizer for geraniums and other neutral pH loving plants. The high phosphorus content promotes strong root growth and bud set - great for pink hydrangeas. The high nitrate nitrogen content (56%) and the general-purpose level of micronutrients help minimize nutritional toxicities on geraniums.



General Purpose [20-20-20]

- The general-purpose industry standard, 20-20-20 is great for maintaining plants in garden center and growing facilities
- It provides fast green-up and great foliar expansion due to the high percentage of ammonium and urea nitrogen plus balanced phosphorus and potassium for excellent root and shoot growth



High Performance [25-5-15]

- High efficiency formula designed to maximize your NPK delivery while keeping a balance of macro secondary and micronutrients for optimum plant growth
- Best as a continuous feed for heavy feeding plants in moderate to warm temperatures
- Micronutrient levels are comparable to Peat-Lite formulas
- Can be used as a nutrient booster for great green-up for almost all varieties



MagMum [21-8-18]

- High Nitrate, High Potential Acidity formulation Mums require
- Extra Magnesium for improved greening
- Peat-Lite trace element level
- 5% increased efficiency compared to 20-10-20 formulas
- Stretches your fertilizer dollar without compromising performance



Mum Feed [22-5-16]

- Mums are heavy feeders that respond well to additional magnesium, sulfur, and iron
- However, many times the iron becomes unavailable as the pH rises
- The elevated iron levels found in the exclusive FeED iron chelate system keeps the iron available to the plant even if the pH rises during the crop cycle
- The additional 2% nitrogen in this formula reduces your fertilizer usage by approximately 10%, making this product not only nutritionally effective, but cost effective as well



Peat-Lite 15-16-17

- Similar to 20-20-20 but with over 60% nitrate nitrogen, boosted micronutrient levels, and much less acidic reaction in the root media!
- The balanced N-P-K ratio is excellent for producing fast-growing plants or for maintaining plants in a sales environment



Peat-Lite [20-10-20]

- The most popular formulation, 20-10-20 Peat-Lite has approximately twice the level of micronutrients as the GP formulation
- The additional level of micronutrients provides necessary elements absent from most commercially made peat-lite potting media



Petunia Feed [20-03-19]

- Contains double the iron found in typical peat-like formulations
- Iron is derived from three chelate sources - EDDHA, EDTA, and DTPA to keep it available over a broad range of growing medium pH values
- Contains additional magnesium for optimum crop performance
- Low phosphorus level helps prevent excessive elongation
- High nitrate nitrogen, moderately high potential acidity and no urea
- Not recommended for geraniums or other iron sensitive crops



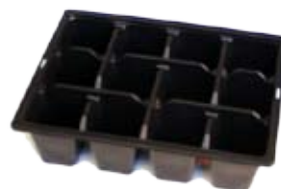
Plant Starter [9-45-15]

- Initial use of 9-45-15 when transplanting into cells or beds supplies the high-phosphorus ratio designed to boost root growth prior to shoots
- Can also be used to correct or supplement low phosphorus situations, especially in outdoor production.



Plug [13-2-13]

- This is an ideal fertilizer for plug production with 6% calcium and 3% magnesium
- It is formulated with 94% nitrate nitrogen and a low phosphorus content to promote compact, sturdy plugs
- It can be tank-mixed with other Jack's LXTM formulas



Poinsettia [15-4-15]

- This product is designed to fit the needs of the newer poinsettia varieties that need the micronutrients, but a lesser amount of micronutrients
- It contains 50% more micronutrients than a typical poinsettia peat-lite formula, yet it provides less boron
- The iron is derived from three chelate sources to keep it available over a wide range of growing medium pH values



Pure Water [17-4-17]

- The Jack's LXTM blend for growers desiring a 4- 1 -4 ratio for pure water
- This formulation will not cause pH crash in media
- Calcium is supplied at 3% with magnesium at 1.5% to add what pure water does not supply



JACK'S CLASSIC RETAIL FERTILIZER

We introduced our line of consumer products under the Jack's Classic label back in 1999. We offer a full line of fertilizer formulas made with the exact same quality raw materials that we use for the professional greenhouse grower. These formulas are available in many different sizes and packages to fit our home grower's needs.



Total Nitrogen (N)	17%	Copper (Cu)	0.05%
10.58% Ammoniacal Nitrogen		0.05% Chelated Copper (Cu)	
6.42% Urea Nitrogen		Iron (Fe)	0.30%
Available Phosphate (P₂O₅)	6%	0.30% Chelated Iron (Fe)	
Soluble Potash (K₂O)	6%	Manganese (Mn)	0.05%
Total Sulphur (N)	14%	0.05% Chelated Manganese (Mn)	
14.0% Combined Sulphur (S)		Molybdenum (Mo)	0.0009%
Boron (B)	0.02%	Zinc (Zn)	0.05%
		0.05% Chelated Zinc (Zn)	



Total Nitrogen (N)	20%	Iron (Fe)	0.10%
2.1% Nitrate Nitrogen		0.10% Chelated Iron (Fe)	
17.9% Urea Nitrogen		Manganese (Mn)	0.05%
Available Phosphate (P₂O₅)	20%	0.05% Chelated Manganese (Mn)	
Soluble Potash (K₂O)	20%	Molybdenum (Mo)	0.0009%
Boron (B)	0.02%	Zinc (Zn)	0.05%
Copper (Cu)	0.05%	0.05% Chelated Zinc (Zn)	
0.05% Chelated Copper (Cu)			



Total Nitrogen (N)	10%	Copper (Cu)	0.05%
5% Ammoniacal Nitrogen		0.05% Chelated Copper (Cu)	
5% Nitrate Nitrogen		Iron (Fe)	0.10%
Available Phosphate (P₂O₅)	30%	0.10% Chelated Iron (Fe)	
Soluble Potash (K₂O)	20%	Manganese (Mn)	0.05%
Magnesium (Mg)	0.50%	0.05% Chelated Manganese (Mn)	
0.50% Water Soluble Magnesium (Mg)		Molybdenum (Mo)	0.0009%
Boron (B)	0.02%	Zinc (Zn)	0.05%
		0.05% Chelated Zinc (Zn)	